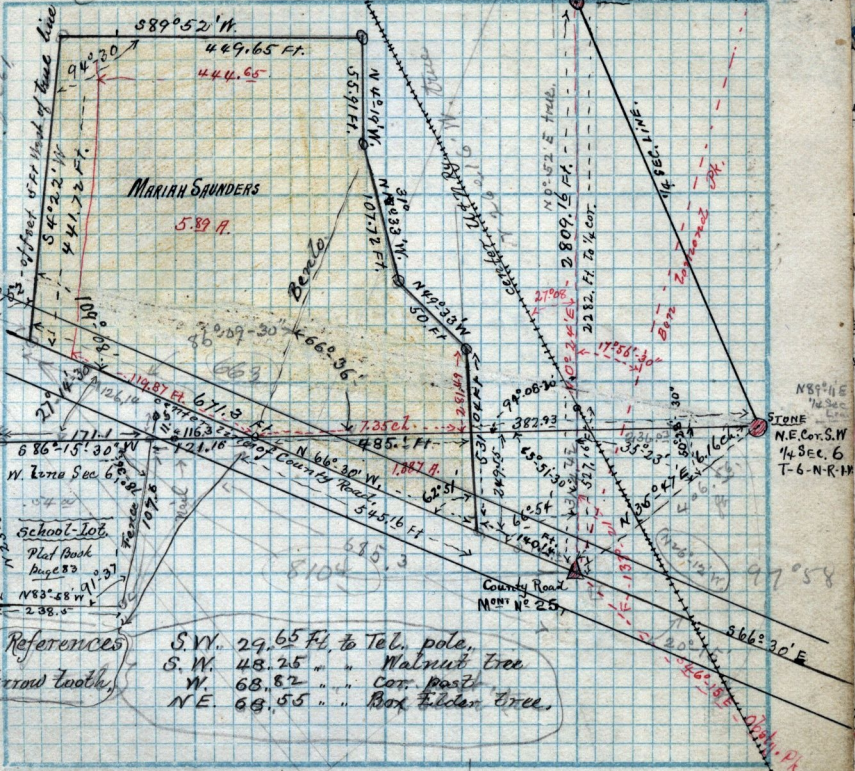


(See Plat Book - page 132)

STONE N.E. COR. N.W. 1/4 SEC. 6 T-6.

11



References  
 Harrow tooth,

- S.W. 29.65 Ft. to Tel. pole,
- S.W. 48.25 " " Walnut tree
- W. 68.82 " " Cor. post
- N.E. 68.55 " " Box Elder tree,

Note! Firm Co. Mt. 25  
 The Ctr. of Co. Road run N. 0° 14' W  
 Scale: see - Field Book P. - p. 78 Chains per inch.

Copy of deed from W<sup>ro</sup> G. Biddle to John Thomas Biddle dated July 11-1885 - S-370 - Part of Lot 3 - B-7 - Plat B - Ogden City Survey. Brg. N.W. cor. of said Lot, S 46. feet E 20 Rods N 46. feet W. 20 Rods to brg.

Copy of deed from W<sup>ro</sup> Price to James Iverson dated Dec 19-1884 S-116 - S.E. 1/4 Sec 2 & 1/2 p 6-11. R. 2 N. Brg. 4.50 ch N. 7.40 ch W. from S.E. cor. said 1/4 Sec. N. 3.00 ch, N 30° E 13.15 ch, E 8.50 ch, S 0.68 ch, W. 5.50 ch, S 12.50 ch to brg. Also partly S.E. 1/4 Sec 18 p 6-11. R. 1 W. Brg. 6.00 ch E & 3.75 ch N. from S.W. cor. of said 1/4 Sec. N 10.82 ch, W. 5.25 ch S 19° 28' E to point N. of brg E. to brg.

Copy of Option Contract from W<sup>ro</sup> Rod to C. M. Douglass. Part of S.W. 1/4 Sec 19 T-6 N-R-1 W. Brg. 8.50 ch N. 1.00 ch E. from S.W. cor. said 1/4 Sec. S 87° E 5.00 ch. thence 30° that 10.50 ch S 87° W. 5.00 ch, S 3° E 9.98 ch, to brg. 5.1/2 a.